

More than a Conference Hotel



Lufthansa Seeheim



THINK TERMINAL

Special location

*Gateway to
new ideas*

lufthansa-seeheim.de

Airport atmosphere in Seeheim

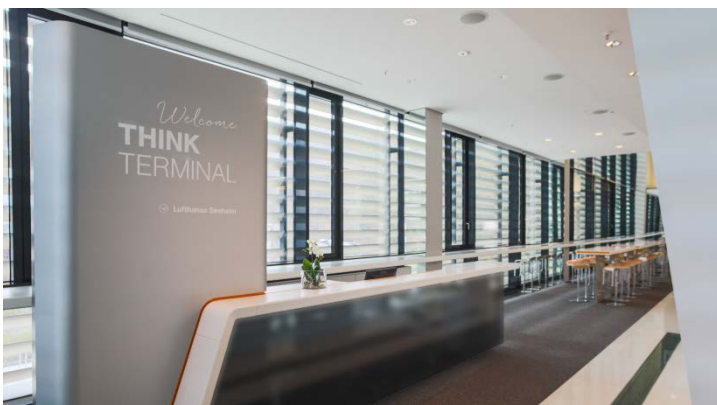
new work spirit

Think Terminal

With the "Think Terminal", a new location for exceptional events has opened in the conference hotel Lufthansa Seeheim. This room combines the typical elements of the airport with the surrounding countryside and the modern hotel complex. Including, for instance, the airport display board, its own hospitality desk, an impressive tower and several gates, as functionally usable breakout rooms.

This new conference world offers 650 m² for meetings, open-space workshops, conferences and day and evening events for up to 100 people in a new and unique setting.

Check in to our Think Terminal and leave after your event with a suitcase full of ideas for your journey.



Create the space you need

The location – for a total of 100 people

The hall

The focal point of all the facilities is the large hall with a central screen and scene surface. Whether with beanbags, standing or on classic seating arrangements, everything takes place in this area.

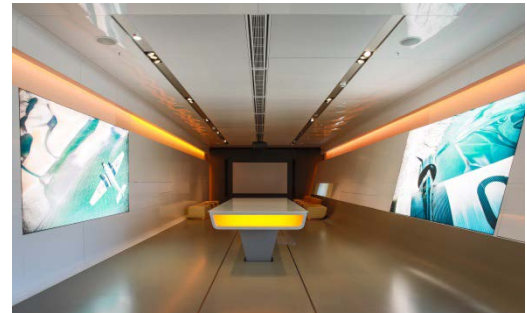
377 m² area



Gate 1 – Lufthansa Feeling

This breakout room is at the end of the hall, and is furnished with writable desks, seating groups and a calming lighting scenario. Naturally, the classic beamer is also integrated.

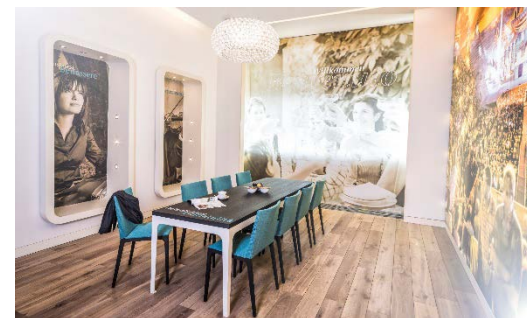
130 m² breakout room



Gate 2 – Dolce Vita

Curtains up for the Arena di Verona with a hint of the dolce vita. From the hall, immerse yourself in a cosy room with a large table that is ideal for a coffee break.

37 m² breakout room



Gate 3 – Focus on creativity

The best conditions for transferring the ideas in your head to the writable walls. All the necessary equipment for the workshop is available in true-to-style on-board trolleys: a room for lateral and revolutionary thinkers.

64 m² breakout room



Location hire per day gross € 2,500.00

The Think Terminal can only be booked in its entirety and including all the gates.

Fuel up before take off

Food concepts

With regard to the culinary selection, there are various concepts available to you matching our Think Terminal.

Depending on the size of the group, the conference flat rates "Elements classic" or "Elements premium" offer the perfect refreshments for all conference participants. Lunch and dinner are taken in our restaurant seeheim's eat & meet. The coffee breaks are served on the event site.

Don't want to leave the creative room?

The available add-ons are a permanent coffee break, a quick lunch or a separate dinner.

Add-ons at a glance:

Coffee break "Terminal" as a permanently available break and all-day self-service of e.g. breakfast salad, fresh brioche, forest berry crumble or cold-brew coffee cake.

Surcharge per person on booked rate gross € 20.00

A "Quick Lunch" in the Terminal always includes a salad in a glass and a dessert. Additional components can be added individually.

Price per person from gross € 29.00 excluding drinks

Served from the "on-board trolley": our chef's choice of a light 3-course meal, based on Business Class.

Price per person from gross € 29.00 excluding drinks

There are four different "Dinner concepts" for the separate evening event. They all already contain an arranged starter and the chef's choice of dessert.

Price per person from gross € 38.00 excluding drinks

Dining in new dimensions